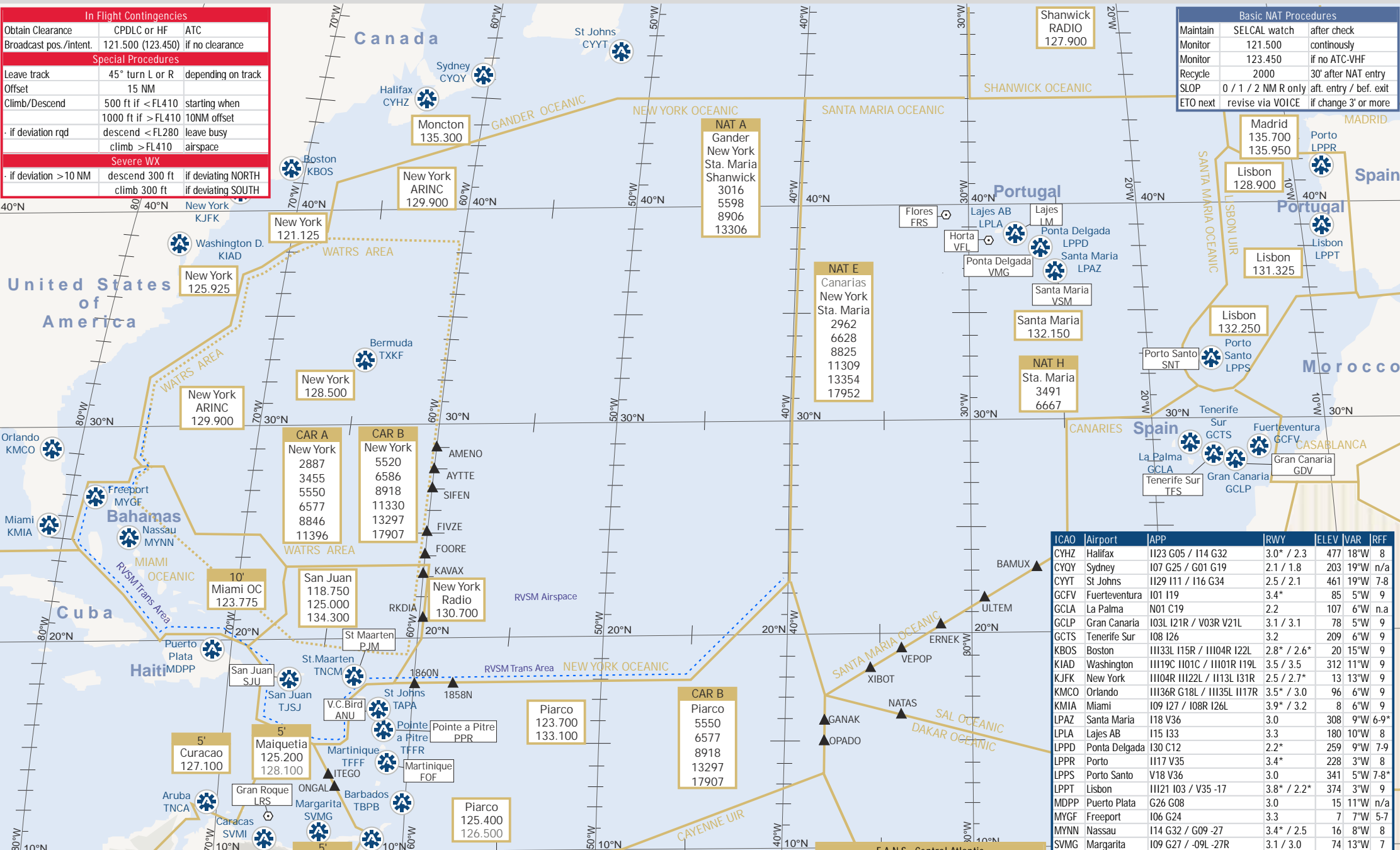


In Flight Contingencies		
Obtain Clearance	CPDLC or HF	ATC
Broadcast pos./intent.	121.500 (123.450) if no clearance	
Special Procedures		
Leave track	45° turn L or R	depending on track
Offset	15 NM	
Climb/Descend	500 ft if < FL410	starting when
	1000 ft if > FL410	10NM offset
	if deviation reqd	descend < FL280
		climb > FL410
		leave busy airspace
Severe WX		
	if deviation > 10 NM	descend 300 ft
		climb 300 ft
		if deviating NORTH
		if deviating SOUTH

Basic NAT Procedures		
Maintain	SELCAL watch	after check
Monitor	121.500	continuously
Monitor	123.450	if no ATC-VHF
Recycle	2000	30' after NAT entry
SLOP	0 / 1 / 2 NM R only	aft. entry / bef. exit
ETO next	revise via VOICE	if change 3' or more



CAR A	CAR B
New York 2887	New York 5520
3455	6586
5550	8918
6577	11330
8846	13297
11396	17907

CAR B
Piarco 5550
6577
8918
13297
17907

ICAO	Airport	APP	RWY	ELEV	VAR	RFF
CYHZ	Halifax	I123 G05 / I14 G32	3.0* / 2.3	477	18°W	8
CYQY	Sydney	I07 G25 / G01 G19	2.1 / 1.8	203	19°W	n/a
CYYT	St Johns	I129 I11 / I16 G34	2.5 / 2.1	461	19°W	7-8
GCFV	Fuerteventura	I01 I19	3.4*	85	5°W	9
GCLA	La Palma	N01 C19	2.2	107	6°W	n.a
GCLP	Gran Canaria	I03L I21R / V03R V21L	3.1 / 3.1	78	5°W	9
GCTS	Tenerife Sur	I08 I26	3.2	209	6°W	9
KBOS	Boston	I1133L I15R / I1104R I22L	2.8* / 2.6*	20	15°W	9
KIAD	Washington	I1119C I101C / I1101R I19L	3.5 / 3.5	312	11°W	9
KJFK	New York	I1104R I1122L / I1131L I31R	2.5 / 2.7*	13	13°W	9
KMCO	Orlando	I1136R G18L / I1135L I117R	3.5* / 3.0	96	6°W	9
KMIA	Miami	I09 I27 / I08R I26L	3.9* / 3.2	8	6°W	9
LPZA	Santa Maria	I18 V36	3.0	308	9°W	6-9*
LPLA	Lajes AB	I15 I33	3.3	180	10°W	8
LPPD	Ponta Delgada	I30 C12	2.2*	259	9°W	7-9
LPPR	Porto	I117 V35	3.4*	228	3°W	8
LPPS	Porto Santo	V18 V36	3.0	341	5°W	7-8*
LPPT	Lisbon	I1121 I03 / V35-17	3.8* / 2.2*	374	3°W	9
MDPP	Puerto Plata	G26 G08	3.0	15	11°W	n/a
MYGF	Freeport	I06 G24	3.3	7	7°W	5-7
MYNN	Nassau	I14 G32 / G09 -27	3.4* / 2.5	16	8°W	8
SVMG	Margarita	I09 G27 / -09L -27R	3.1 / 3.0	74	13°W	7
SVMI	C. Maiquetia	I10 G28 / C27 C09	3.5 / 1.2*	235	12°W	9
TAPA	St Johns	G07 V25	2.2*	62	15°W	8
TBPB	Barbados	I09 G27	3.3	169	15°W	9
TFFF	Martinique	I10 G28	2.7*	16	15°W	7-9
TFFR	Pointe a Pitre	I12 G30	2.8*	36	15°W	1-9*
TJSJ	San Juan	I08 G26 / I10 -28	3.1* / 2.4	9	13°W	8
TNCA	Aruba	I11 G29	2.7*	60	10°W	9
TNCM	St Maarten	G10 -28	2.3	13	14°W	n/a
TTTP	Port of Spain	I10 G28	3.1	58	15°W	9
TXKF	Bermuda	I30 G12	2.7*	12	15°W	9*

F A N S Central Atlantic			
Canaries	GCCC	30-15'	ADS CPDLC
Cayenne	SOOO	45-30'	ADS CPDLC
Dakar	GOOO	45-15'	ADS CPDLC primary
Gander	CZOX	45-15'	ADS CPDLC FMC
New York	KZWW	45-15'	ADS CPDLC
Piarco	TTZP	ADS CPDLC	Voice PRY
Sal	GVSC	45-15'	ADS CPDLC
Santa Maria	LPPO	45-15'	ADS CPDLC FMC
Shanwick	EGGX	45-15'	ADS CPDLC FMC

HF Initial call for OCA with ADS or CPDLC			
Callsign		AIRLINE	123
Capability		CPDLC or ADS	
Only 1 option applies:			
State:	next OCA	next	
· if next sector is OCA			
· if next sector is domestic			
· if on OTS:	NAT track	TRACK	_
· if random route:	last 2 OCA fixes		
SELCAL Check		SELCAL	_

New York Oceanic Clearance			
NOTAM A0017/13			
All a/c departing NAM/CAR/SAM airports for NY OC			
Part of Clearance	ATC unit	when	
ROUTING	Delivery	at Departure	AD
ALT and SPD	local ATC	prior entry	

Central Atlantic
 V5.03.04 Update: 03 APR 2014

NOT FOR NAVIGATIONAL PURPOSES

Further Details: www.planningcharts.de
 Contact: feedback@planningcharts.de